

Certificate SGSHK-COC-008254

The Organization

# Tasman KB Pty Ltd



Level 1, Unit 23 & 24, 7 Narabang Way, Belrose, NSW 2085, Australia

has been assessed and certified as meeting the requirements of

## FSC™ Chain-of-Custody

The company was assessed against the following standards

FSC-STD-40-004 V3-1 – Chain of Custody Certification

FSC-STD-40-003 V2-1 Chain of Custody Certification of Multiple Sites

FSC-STD-50-001 Requirements for use of the FSC trademarks by Certificate Holders

for the products detailed in the scope below:

Purchase, storage and sale of FSC 100% and FSC Mix timber products using the Transfer System

This certificate is valid from 03 December 2025 until 24 November 2030 and remains valid subject to satisfactory surveillance audits.

Issue 8. Certified since 25 November 2010

**This is a multi-site certification. Additional site details are listed on the subsequent page. The products and processes / activities covered by the scope are performed by the network of Participating Sites, and not necessarily by each of them.**



Authorised by

Ben Tsang

SGS Hong Kong Limited

Units 303 & 305, 3/F., Building 22E, Phase 3, Hong Kong Science Park, New Territories, Hong Kong

t +(852)2334 4481 - [www.sgs.com](http://www.sgs.com)

The validity of this certificate shall be verified on <https://search.fsc.org>. For the full list of product groups covered by the certificate see <https://search.fsc.org>. This certificate itself does not constitute evidence that a particular product supplied by the certificate holder is FSC-certified [or FSC Controlled Wood]. Products offered shipped or sold by the certificate holder can only be considered covered by the scope of this certificate when the required FSC claim is clearly stated on sales and delivery documents. The certificate remains the property of SGS. The certificates and all copies or reproductions shall be returned or destroyed if requested by SGS.



This document is an authentic electronic certificate for Client' business purposes use only. Printed version of the electronic certificate are permitted and will be considered as a copy. This document is issued by the Company subject to SGS General Conditions of certification services available on [Terms and Conditions](#) | SGS. Attention is drawn to the limitation of liability, indemnification and jurisdictional clauses contained therein. This document is copyright protected and any unauthorized alteration, forgery or falsification of the content or appearance of this document is unlawful.



Certificate SGSHK-COC-008254, continued  
**Tasman KB Pty Ltd**



**FSC™ Chain-of-Custody**

Issue 8

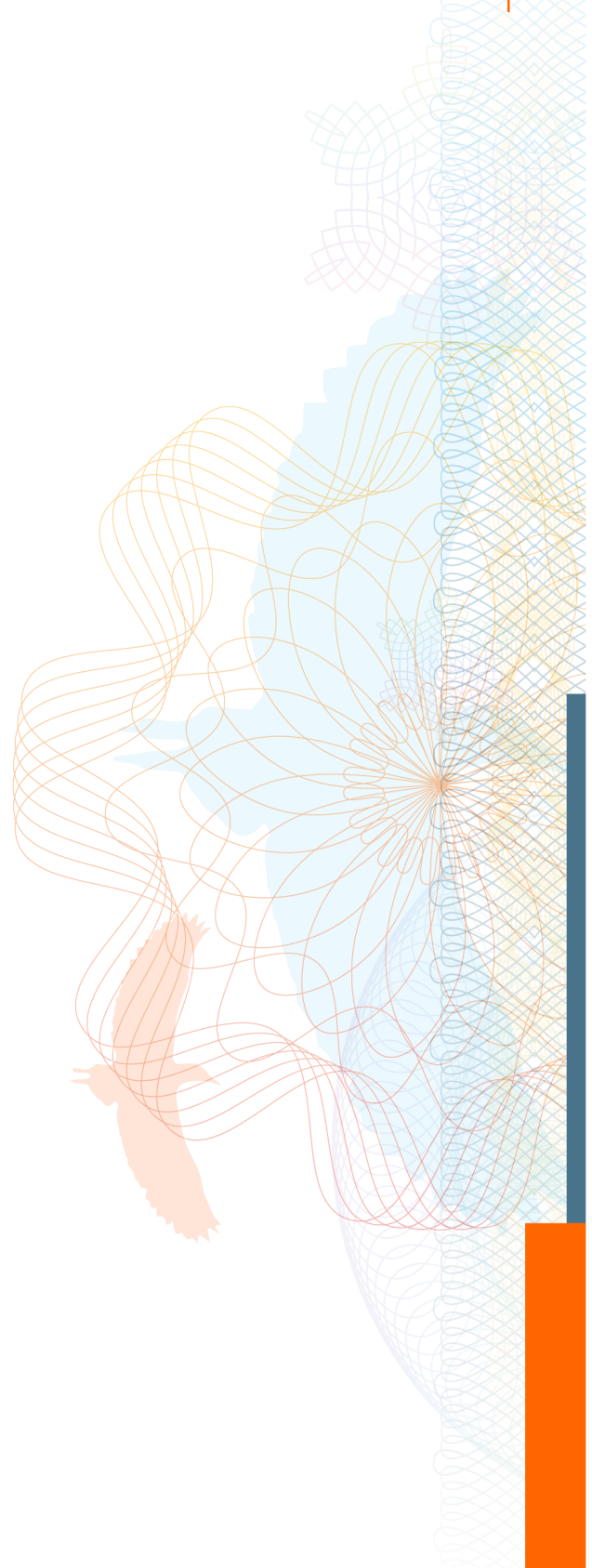
**Additional facilities**

Tasman KB Pty Ltd  
Level 1, Unit 23 & 24, 7 Narabang Way, Belrose, NSW 2085, Australia

Tasman KB Pty Ltd  
69 Titan Drive, Mickleham, VIC 3064, Australia

Tasman KB Pty Ltd  
69 Peterkin Street, Acacia Ridge, QLD 4110, Australia

Tasman KB Pty Ltd  
25 Vallance Street, St Marys, NSW 2760, Australia



This document is an authentic electronic certificate for Client' business purposes use only. Printed version of the electronic certificate are permitted and will be considered as a copy. This document is issued by the Company subject to SGS General Conditions of certification services available on [Terms and Conditions](#) | SGS. Attention is drawn to the limitation of liability, indemnification and jurisdictional clauses contained therein. This document is copyright protected and any unauthorized alteration, forgery or falsification of the content or appearance of this document is unlawful.

