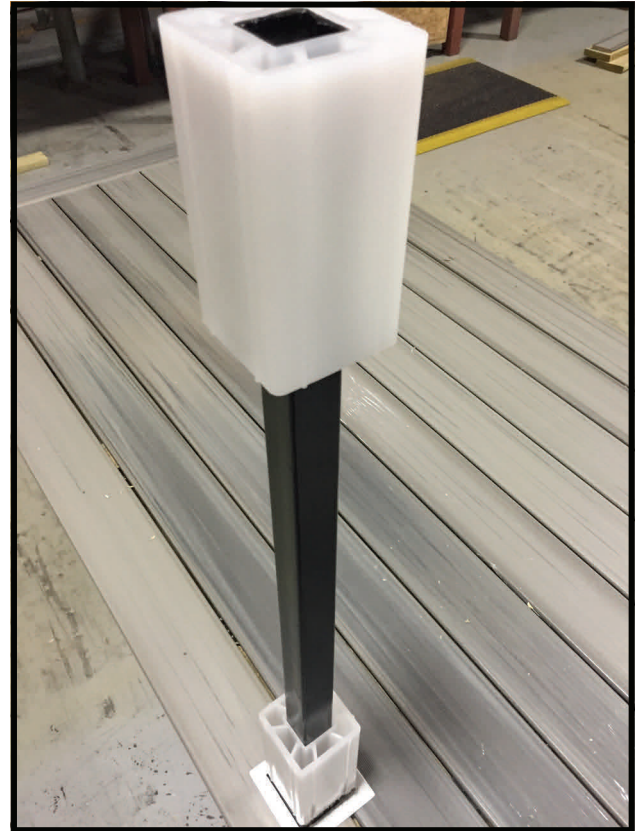


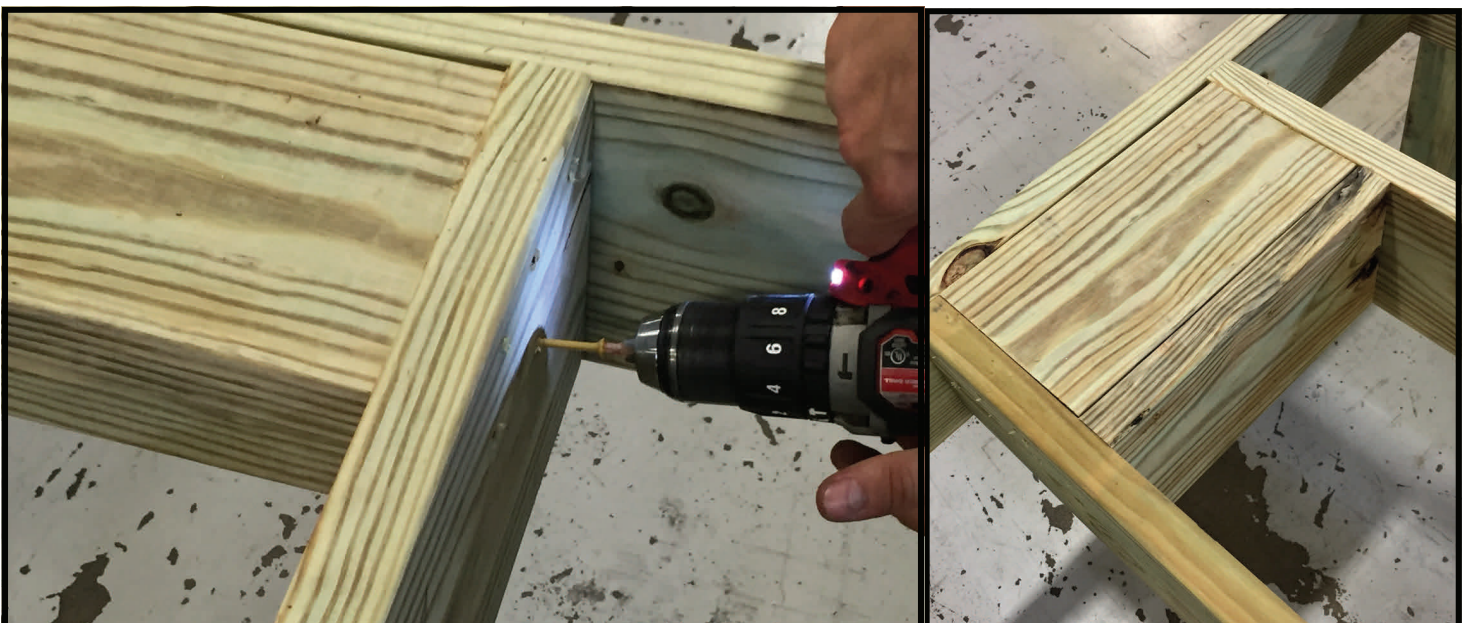
Installation of the DuraLife™ Surface Mount Deck Post

Structural post mounts are attached after the decking has been installed. The post is adjustable for both 36" & 42" rail heights and may be mounted directly to concrete (as is) or to wood or composite decking using a wood mounting kit (sold separately). The wood conversion kit consists of four - 3/8" x 6" galvanized bolts, two mounting plates (top & bottom), and four plate leveling screws.



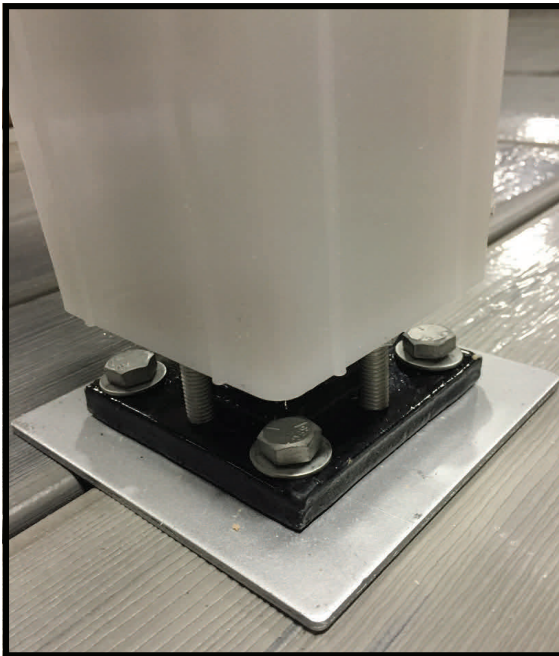
Install Blocking:

Install wood blocking between joists using two 2"x 12" pieces of wood installed flat and screwed to the joists with a third installed vertically and attached between the joist and adjacent blocking.



Drill Holes through Decking & Blocking:

Using the top mounting plate (4 holes) as a template, mark & drill four - 1/2" diameter holes through the decking and wood blocking below.



Install Top Plate, Mount, and Fasteners:

Using the four 3/8" x 6" bolts and washers provided, place top mounting plate and mount over the drilled holes and install fasteners through the decking and wood blocking. If required, use the four -5/16" leveling screws or shims to level the mount on the top of the decking.

Install Bottom Mounting Plate:

Position and install the bottom mounting plate (6 holes) beneath the wood blocking below the deck using the nuts and washers provided. Reposition and level the mount assembly as necessary if not level.

